

number	104837/01	Replaces	-
Date of issue	24-03-2020	Issued first	24-03-2020
		Report number	191101634

**Declaration
regarding the efficiency of a shower heat recovery unit**

DECLARATION OF KIWA

This declaration is based on a single examination by Kiwa on a product supplied by

Zypho, SA

This declaration does not pass a judgment on other products supplied by the manufacturer. The products mentioned below were tested according the procedure according annex B of the NEN 7120+C2/A1:2017. Please see appendix for an overview of the test results.

Zypho iZi 30

class	Flow (l/min)	Volume (l)	Efficiency (%)	Flow resistance (Δ P) (bar)
2	5.8	47	31.3	0.22
3	9.2	73	27.8	0.59
4, 5, 6	12.5	100	25.1	1.07

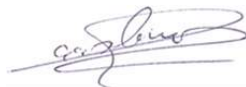
Zypho iZi 40

class	Flow (l/min)	Volume (l)	Efficiency (%)	Flow resistance (Δ P) (bar)
2	5.8	47	38.4	0.13
3	9.2	73	32.8	0.34
4, 5, 6	12.5	100	29.4	0.65

Zypho PiPe 65

Class	Flow (l/min)	Volume (l)	Efficiency (%)	Flow resistance (Δ P) (bar)
2	5.8	47	66.6	0.07
3	9.2	73	62.7	0.18
4, 5, 6	12.5	100	57.6	0.32

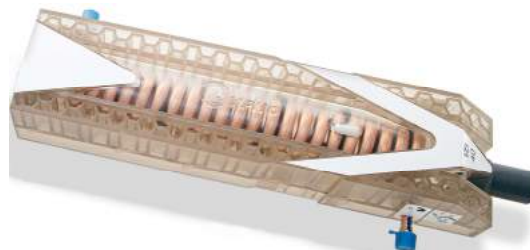
Allard Slomp
Product Manager



Kiwa Nederland B.V.

Kiwa Nederland B.V.
Wilmersdorf 50
Postbus 137
7300 AC Apeldoorn
The Netherlands
Tel. 088 998 33 55
Fax 088 998 36 85
E-mail info@kiwa.nl
www.kiwaenergy.com

Zypho, SA
Rua Barão do Corvo,
37 , 1º F2.
Vila Nova De Gaia
4400-039
PORTUGAL
+351 210 991 351
b2b@zypho.pt
www.zypho.eu



iZi 30 and iZi 40



PiPe 65

